

Student Visa Statistics Higher Education (HE) Update June 2017

Figures for the period to June 2017 are available from the Department of Immigration and Border Protection. <http://www.border.gov.au/about/reports-publications/research-statistics/statistics/study-in-australia>

The visa statistics show only the principal course, not separate components in a course package, as in PRISMS data. The data show lodgments (applications) and grants for students offshore and onshore. The figures here refer to principal applicants only, not dependents also on the student visa. Principal applicants are typically 88% of all student visas, and 60% of PGR 574 visas, where many older students bring families. We report consolidated figures for the 12 months to June 2016. Monthly figures are also available in the tables. The differences between lodgments and grants are due to varying grant rates and processing times.

Onshore grants (students already here and transferring or extending courses) increased by 10.3% across all sectors, including 7.8% in HE coursework, 8.1% in VET, and 2.9% in independent (non-packaged) ELICOS.

Offshore applications are usually new students, and more indicative of trends. Offshore grants for the 12 months increased over the previous year by 10.3%; independent ELICOS by 21.6%, Schools by 8.4%, VET by 1.3%, HE coursework by 12.3%, and PGR by 16.8%, while non award, mostly study abroad/exchange declined slightly by -0.8%.

Table 1: Lodgments and visa grants for principal applicant 12 months to 30 June 2017, compared to the previous year

	All sectors		HE Coursework		PG Research	
	Students	Change	Students	Change	Students	Change
Lodged total	328,592	4.9%	163,261	5.0%	6,690	2.1%
Lodged onshore	106,650	6.8%	46,549	7.1%	2,055	-11.5%
Lodged offshore	221,886	3.9%	116,690	4.1%	4,634	9.6%
Grants total	303,568	10.9%	155,285	11.0%	6,536	8.0%
Grants onshore	98,568	10.3%	43,779	7.8%	1,965	-8.1%
Grants offshore	204,799	11.1%	111,487	12.3%	4,570	16.8%

Note that the location of 56 lodgments and 51 grants was unknown.

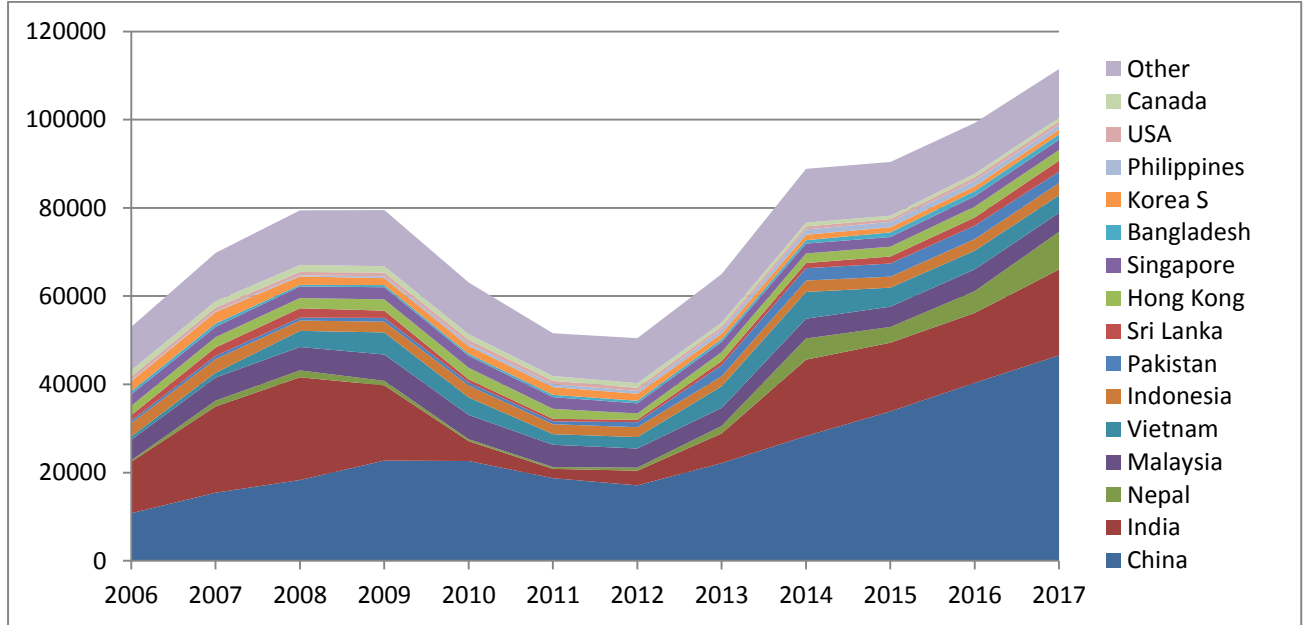
Table 2: Grants offshore HECW Visa by top countries, 12 months to 30 June 2017

		Offshore Grants	Change	Share
	Total	111,487	12.3%	100.0%
1	China	46,560	15.4%	41.8%
2	India	19,465	22.8%	17.5%
3	Nepal	8,550	73.4%	7.7%
4	Malaysia	4,307	-12.8%	3.9%
5	Vietnam	3,964	-6.5%	3.6%
6	Indonesia	2,804	6.7%	2.5%
7	Pakistan	2,561	-16.0%	2.3%
8	Sri Lanka	2,519	36.5%	2.3%
9	Hong Kong	2,399	-3.0%	2.2%
10	Singapore	2,331	-0.1%	2.1%
11	Bangladesh	1,192	0.8%	1.1%
12	Korea S	1,093	0.9%	1.0%
13	Philippines	1,056	-19.1%	0.9%
14	USA	841	9.8%	0.8%
15	Canada	787	1.0%	0.7%

Other	11,058	-4.0%	9.9%
-------	--------	-------	------

Offshore HECW visa grant trends varied by country. China continued to increase, by 15.4%, to 42% of all grants; other notable increases included India, Nepal, Indonesia, and Sri Lanka. Singapore, Bangladesh and Korea were flat, while Malaysia, Vietnam, Pakistan, Hong Kong and the Philippines declined.

Figure 1: HECW offshore visa grants by financial year



- P O'Halloran. COPHE International Advisor